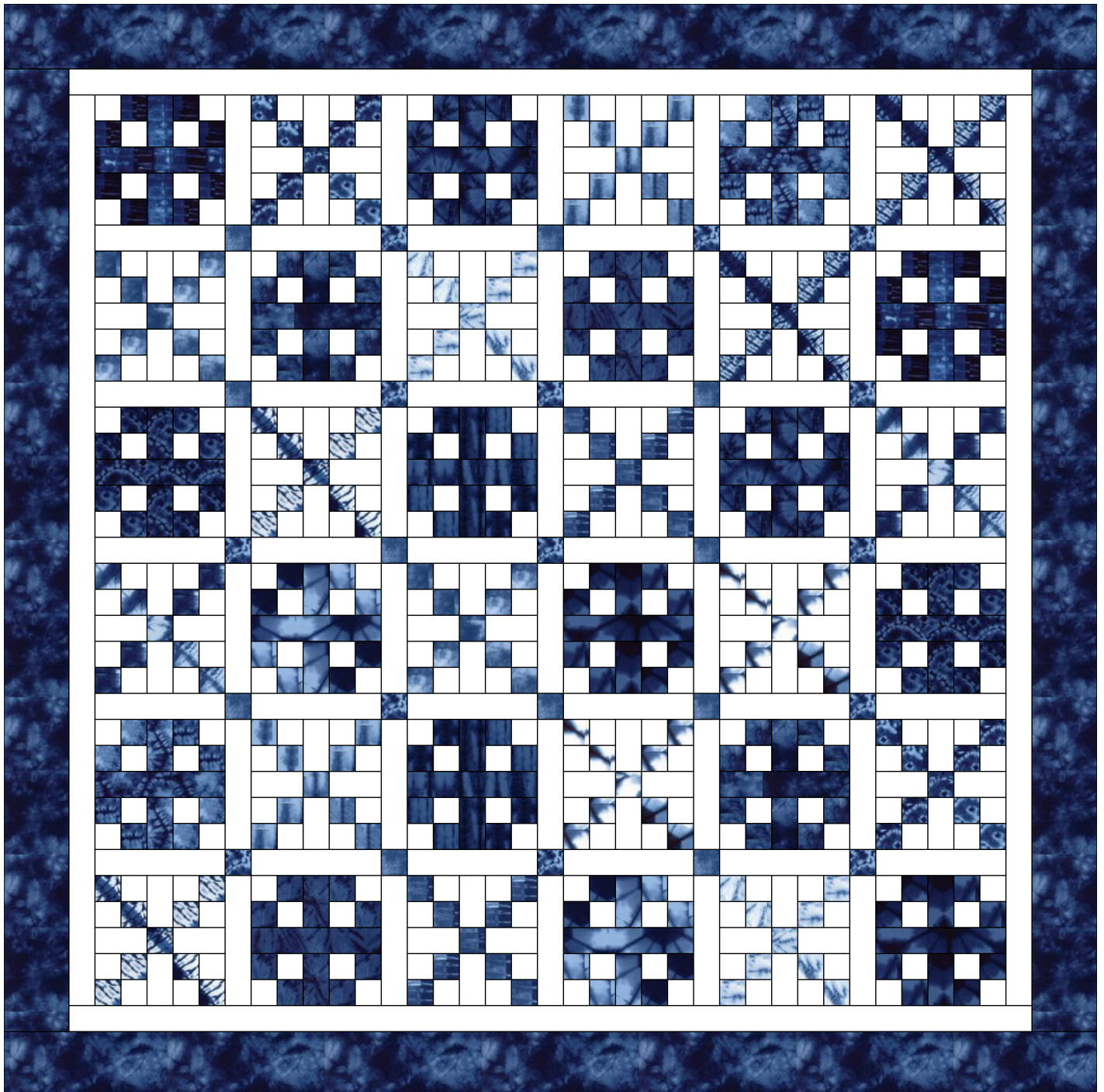


Full
Size

DDD Designs Wagon Wheel

www.dddesigns.com

Quilt pattern designed by Dennis Day



FABRIC REQUIREMENTS

Print 2.5" Strips = 36 2½" strips

Background 2.5" Strips = 50 2½" strips

OR 40 2½" strips and ¾ yard

OR 3¾ yards

Outer Border Yardage = 1¼ yards

Makes a quilt measuring 84" x 84"

SECTION ONE: CUTTING THE FABRIC

Step 1: Separate your print strips into two stacks of 18 strips. One set will be used to create Block A and the other will be used for both Block B and the sashing cornerstones. See Fig 2A.

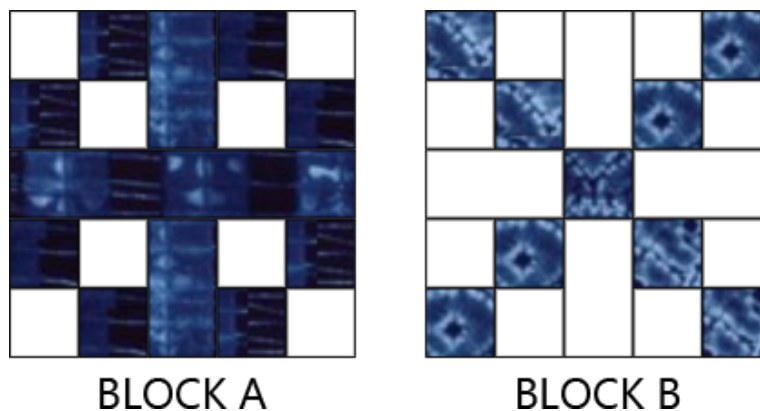


Fig 2A

Step 2: Cut each 2½" strip from the stack for Block A into one 20½" strip, one 10½" strip and two 4½" strips. Keep each matching set of pieces together. See Fig 2B.

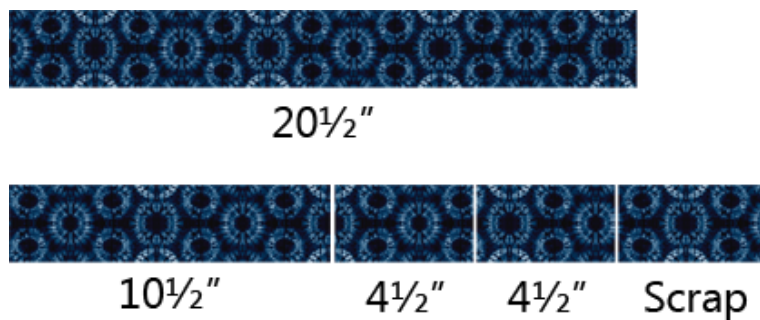


Fig 2B

Step 3: Cut each $2\frac{1}{2}$ " strip from the stack for Block B into one $20\frac{1}{2}$ " strip and one $2\frac{1}{2}$ " square. Keep each matching pair of pieces together. Save the remainder of each strip for sashing cornerstones. See Fig 3A.

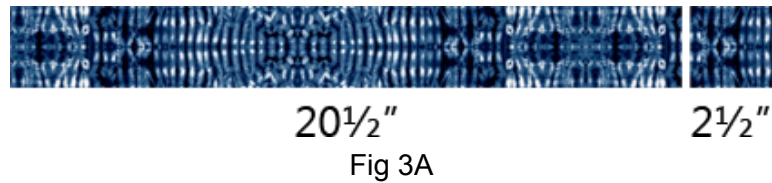


Fig 3A

Step 4: Cut 15 background $2\frac{1}{2}$ " strips into four $10\frac{1}{2}$ " strips for a total of 60 pieces. Set aside for sashing. See Fig 3B.

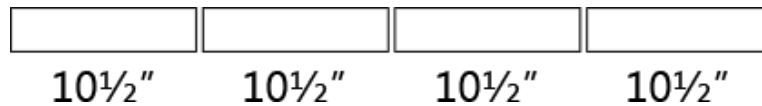


Fig 3B

Step 5: Cut 8 background $2\frac{1}{2}$ " strips into nine $4\frac{1}{2}$ " strips. Set these aside for Block B. See Fig 3C.

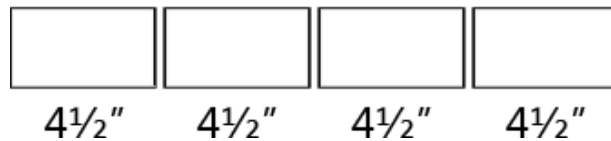
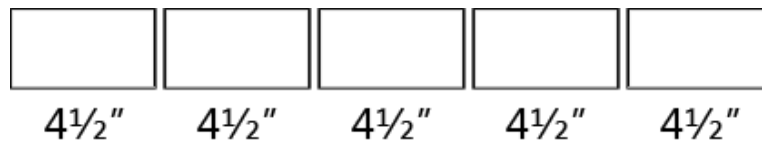


Fig 3C

Step 6: Cut 18 background $2\frac{1}{2}$ " strips into two $20\frac{1}{2}$ " strips for a total of 36 pieces. See Fig 3D.

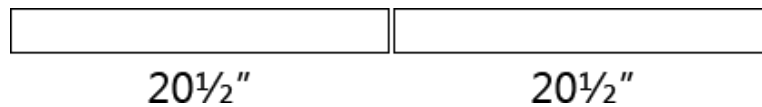


Fig 3D

Step 7: Cut seven 5½" strips from the outer border fabric. See Fig 4A.

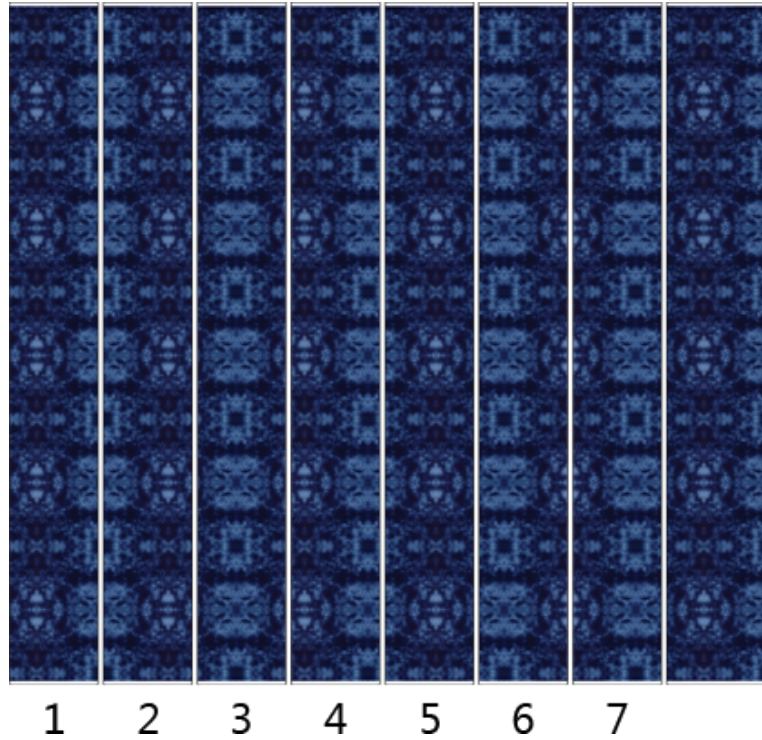


Fig 4A

SECTION TWO: BLOCK A ASSEMBLY

Step 1: Pair a background 2½" x 20½" strip with a print 2½" x 20½" strip for Block A. Stack right sides together. Sew along the length of the strip with a ¼" seam. See Fig 4B.



Fig 4B

Step 2: Open and press the strip set. Subcut the strip set into 2½" lengths. See Fig 4C.

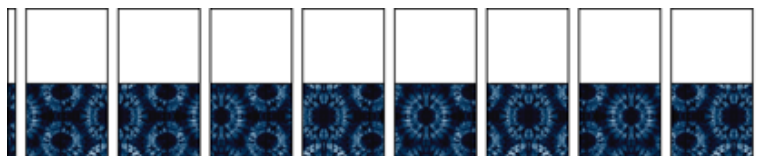


Fig 4C

Step 3: Pair up strip set pieces to be sewn into 4-patches. See Fig 5A.

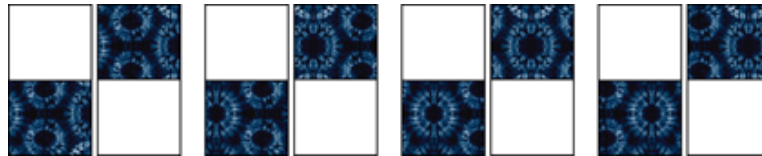


Fig 5A

Step 4: Stack the strip set pairs right sides together. Sew together with a $\frac{1}{4}$ " seam allowance to complete the 4-patches. See Fig 5B.

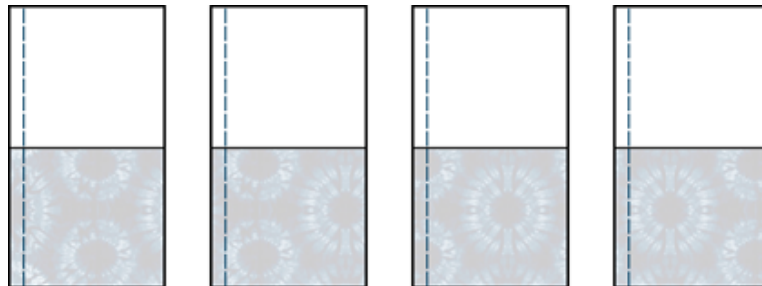


Fig 5B

Step 5: Arrange the 4-patches as shown along with the matching $2\frac{1}{2}$ " x $4\frac{1}{2}$ " print strips. Note the placement of the background fabric in the 4-patches. See Fig 5C.

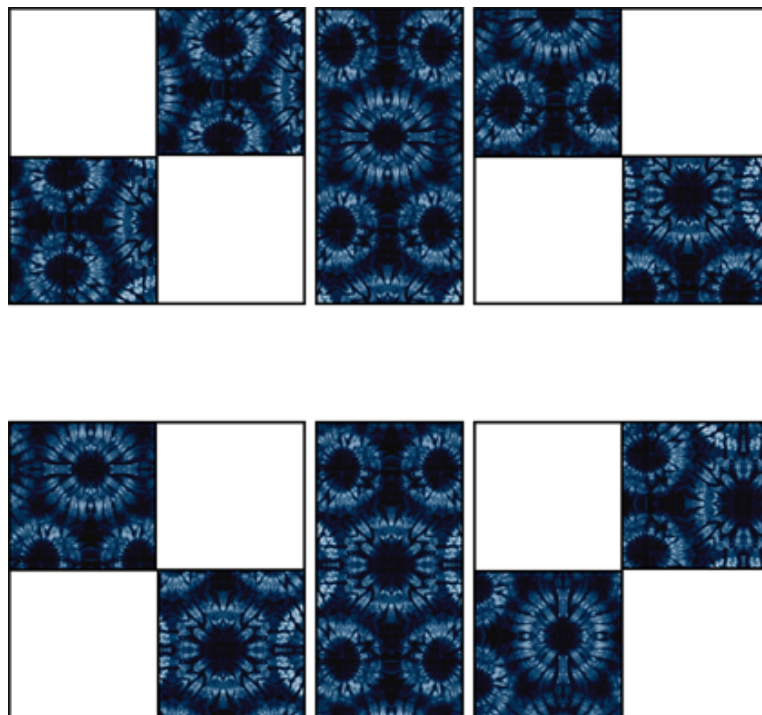


Fig 5C

Step 6: Sew the 4-patches together as shown below. See Fig 6A.

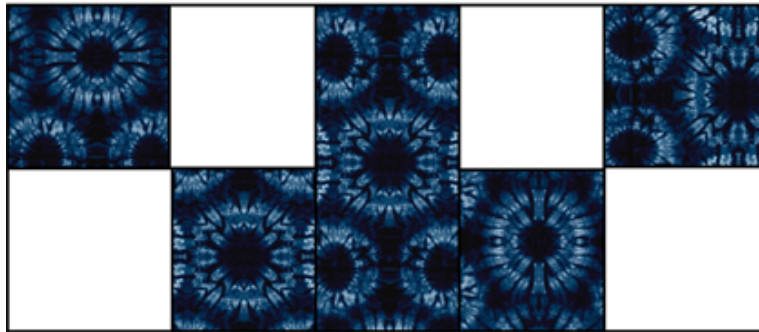
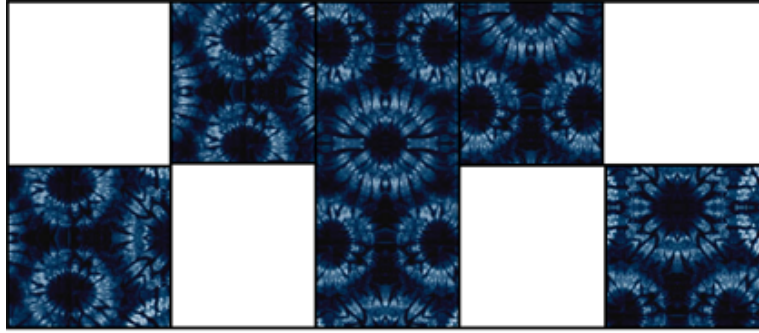


Fig 6A

Step 7: Sew the matching $2\frac{1}{2}$ " x $10\frac{1}{2}$ " fabric strip to the 4-patch assemblies to complete Block A. Make 18. See Fig 6B.

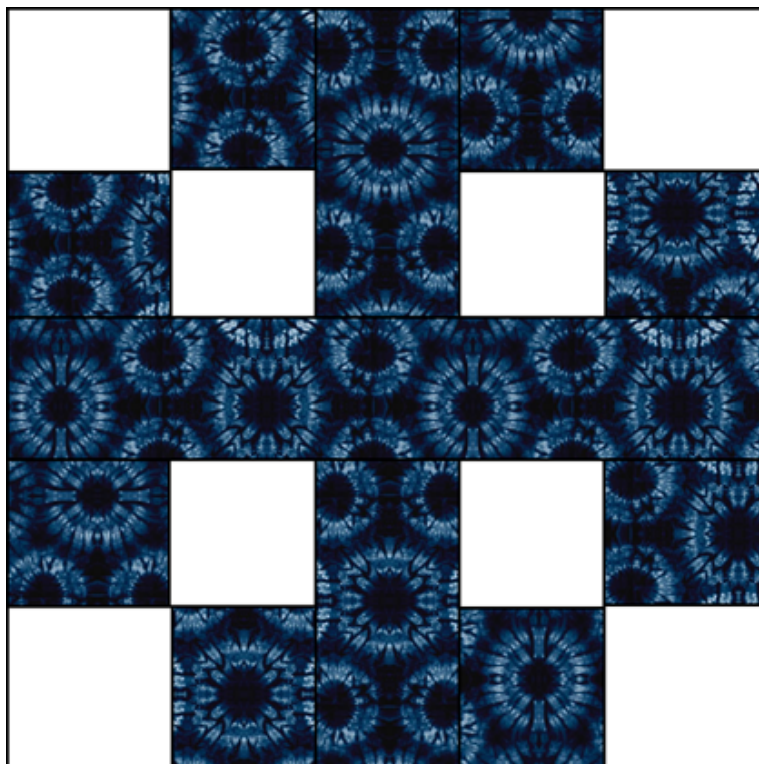


Fig 6B

SECTION THREE: BLOCK B ASSEMBLY

Step 1: Pair a background $2\frac{1}{2}$ " x $20\frac{1}{2}$ " strip with a print $2\frac{1}{2}$ " x $20\frac{1}{2}$ " strip for Block B. Stack right sides together. Sew along the length of the strip with a $\frac{1}{4}$ " seam. See Fig 7A.



Fig 7A

Step 2: Open and press the strip set. Subcut the strip set into $2\frac{1}{2}$ " lengths. See Fig 7B.

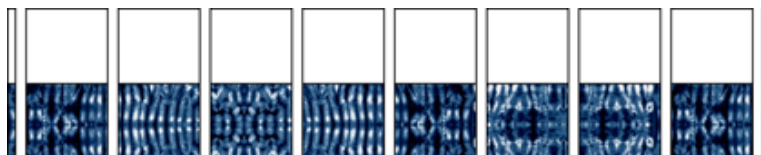


Fig 7B

Step 3: Pair up strip set pieces to be sewn into 4-patches. See Fig 7C.

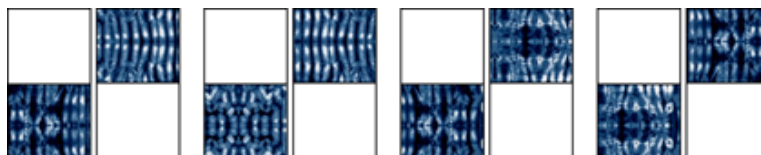


Fig 7C

Step 4: Stack the strip set pairs right sides together. Sew together with a $\frac{1}{4}$ " seam allowance to complete the 4-patches. See Fig 7D.

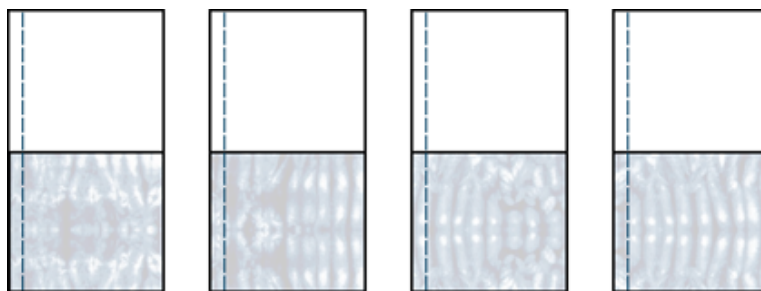


Fig 7D

Step 5: Arrange the 4-patches as shown along with 2½" x 4½" background strips. Note the placement of the background fabric in the 4-patches. See Fig 8A.

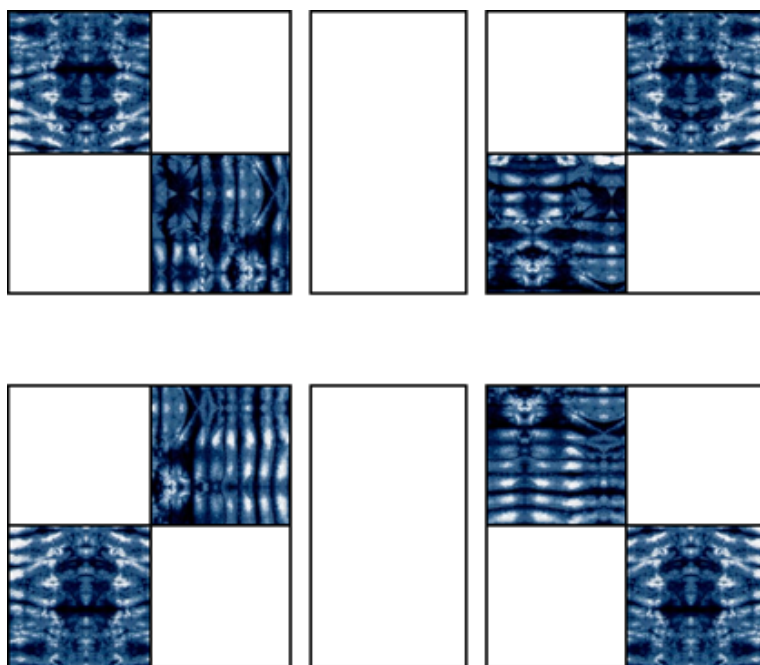


Fig 8A

Step 6: Sew the 4-patches together as shown below. See Fig 8B.

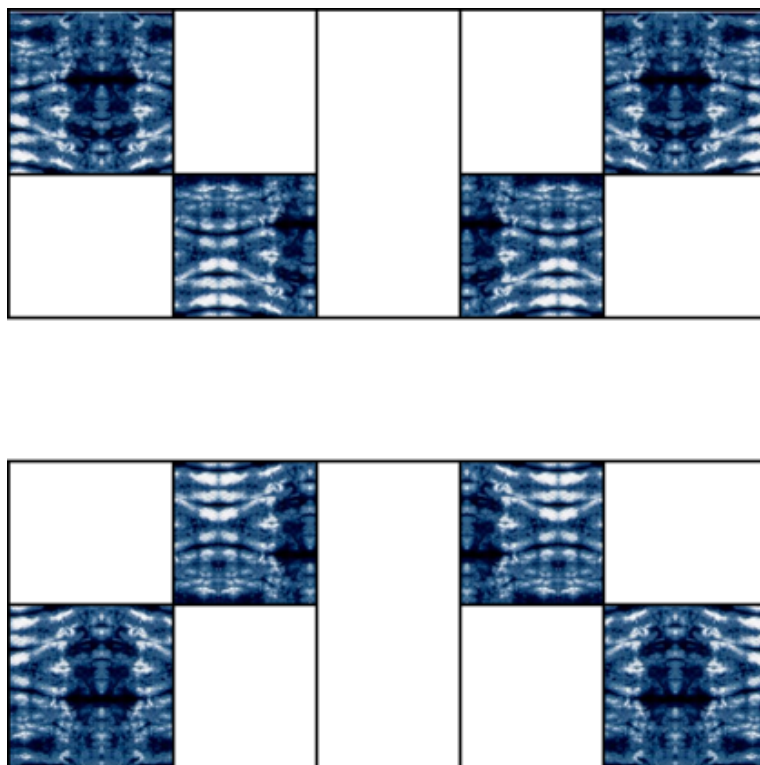


Fig 8B

Step 7: Sew a 2½" x 4½" background strip to opposite sides of the matching 2½" print square piece to create the center row of the block. See Fig 9A.

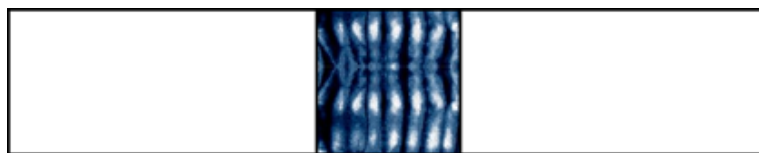


Fig 9A

Step 8: Sew the center row of the block to the the 4-patch assemblies to complete Block B. Make 18. See Fig 9B.

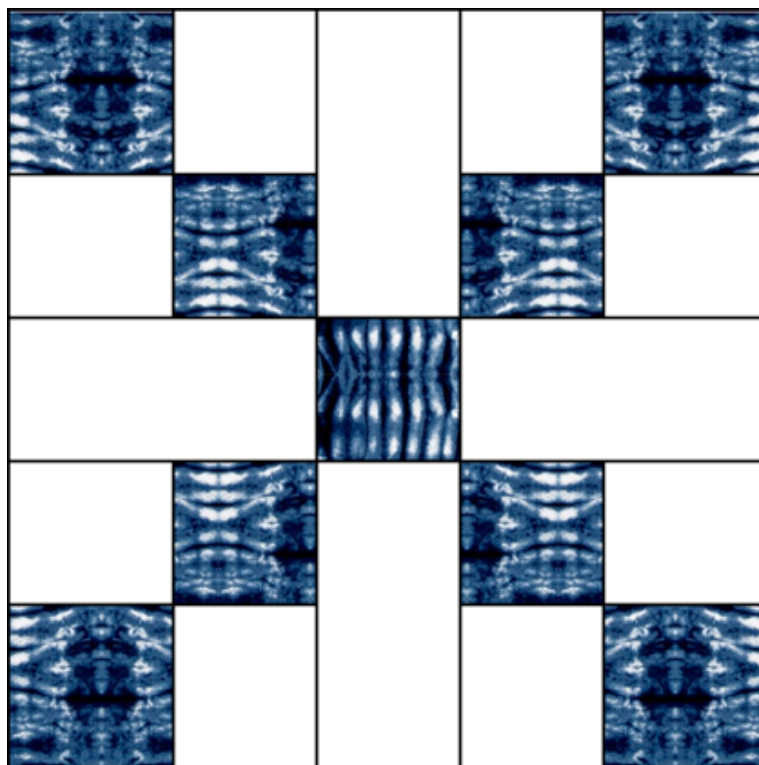


Fig 9B

SECTION FOUR: SASHING

Step 1: Select three each of Block A and Block B. Arrange your blocks so that the blocks alternate from Block A and Block B. See Fig 9C.



Fig 9C

Step 2: Select five background $2\frac{1}{2}$ " x $10\frac{1}{2}$ " pieces to be used as sashing between each block. Sew the row together as shown below. Make six rows. See Fig 10A.



Fig 10A

Step 3: Cut twenty-five $2\frac{1}{2}$ " squares from the scrap pieces of print fabric. These are your cornerstones and will be used to connect your lattice blocks. See Fig 10B.



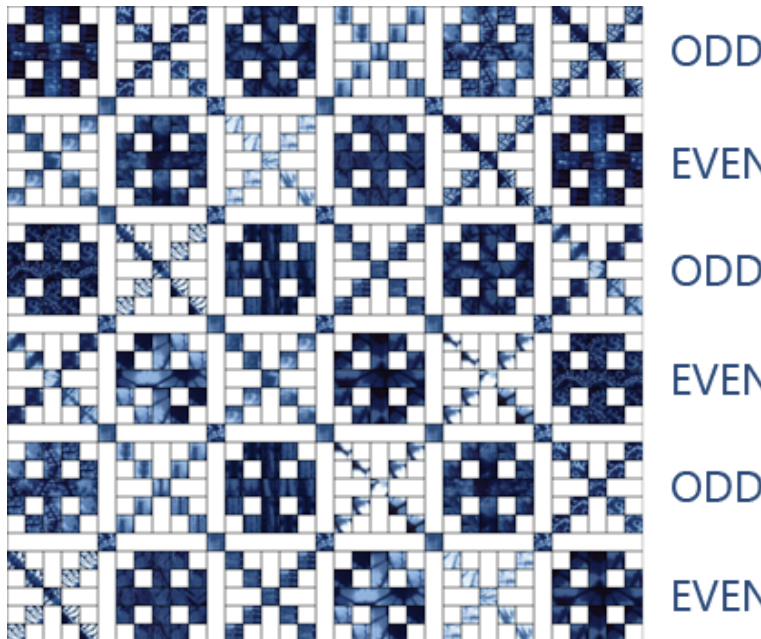
Fig 10B

Step 4: Select six $2\frac{1}{2}$ " x $10\frac{1}{2}$ " background pieces and 5 cornerstones. Sew the pieces together in a row as shown below to form your sashing rows. Make five sashing rows. See Fig 10C.



Fig 10C

Step 5: Assemble your quilt top by attaching a sashing strip to the bottom of your first row of blocks. Then attach your second row of blocks to the bottom of the first sashing. Repeat this step of alternating between adding sashing rows and block rows. Be sure to rotate your block rows so that every odd row starts with Block A and every even row starts with Block B. See Fig 10D.



ODD

EVEN

ODD

EVEN

ODD

EVEN

Fig 10D

SECTION FIVE: BORDERS

Step 1: Sew seven 2½" x WOF (Width of Fabric) background strips together end to end by placing the end of one strip over the end of the next strip at a 90 degree angle. Sew the strips right sides together as shown below to create one long inner border strip. See Fig 11A.

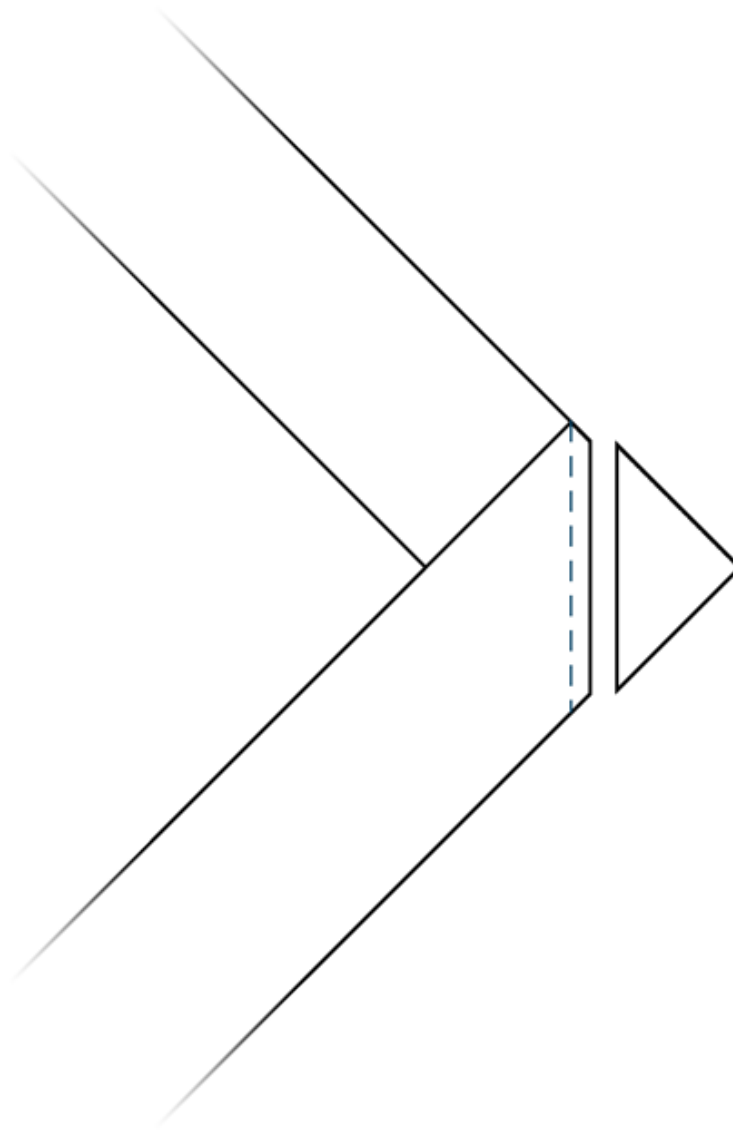


Fig 11A

Step 2: Sew the inner border strip to the right edge of the quilt and trim to the length of the quilt. Repeat this step for the left edge of the quilt. See Fig 12A.

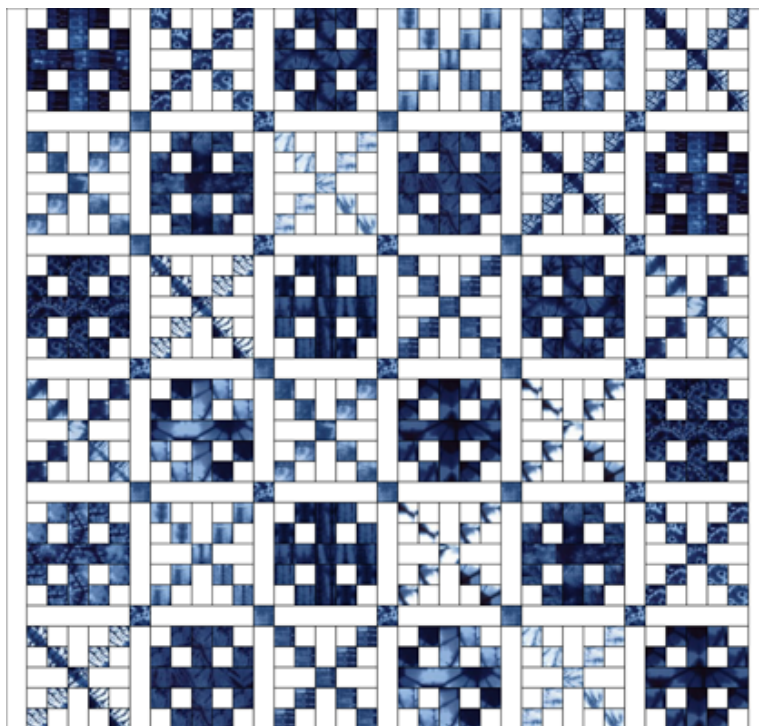


Fig 12A

Step 3: Sew the inner border strip to the top and bottom edges of the quilt and trim to the width of the quilt. See Fig 12B.

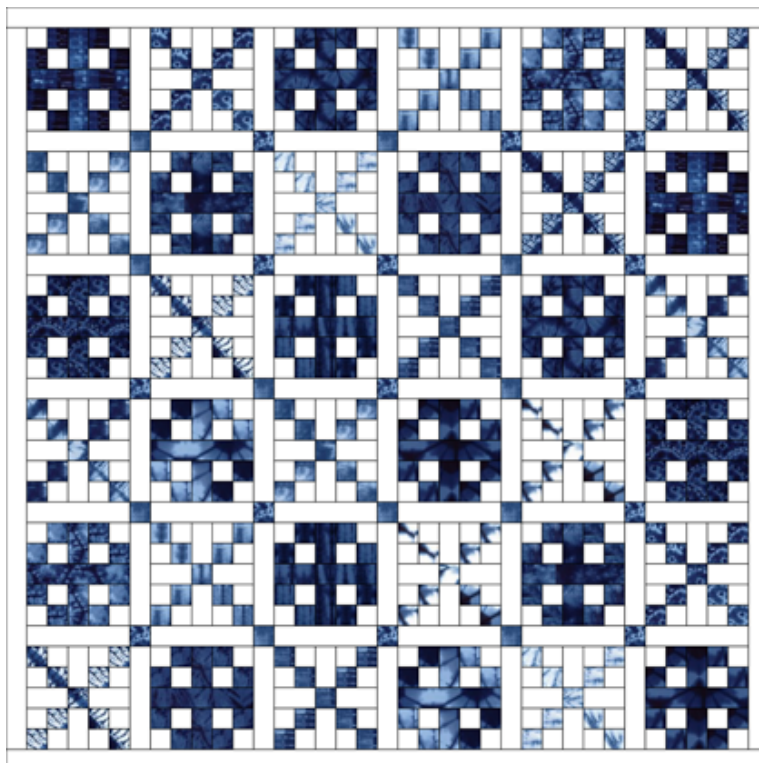


Fig 12B

Step 4: Sew seven 5½" x WOF outer border strips together end to end by placing the end of one strip over the end of the next strip at a 90 degree angle. Sew the strips right sides together as shown below to create one long outer border strip. See Fig 13A.

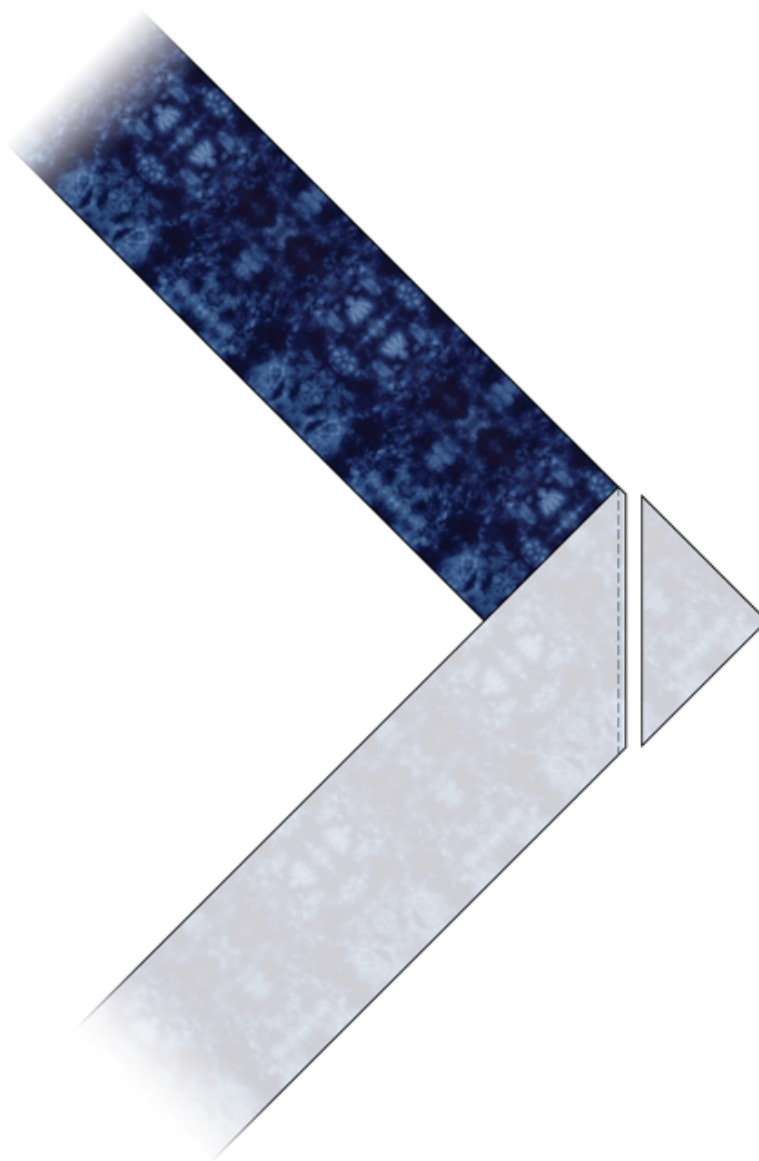


Fig 13A

Step 5: Sew the outer border strip to the right edge of the quilt and trim to the length of the quilt. Repeat this step for the left edge of the quilt. See Fig 14A.

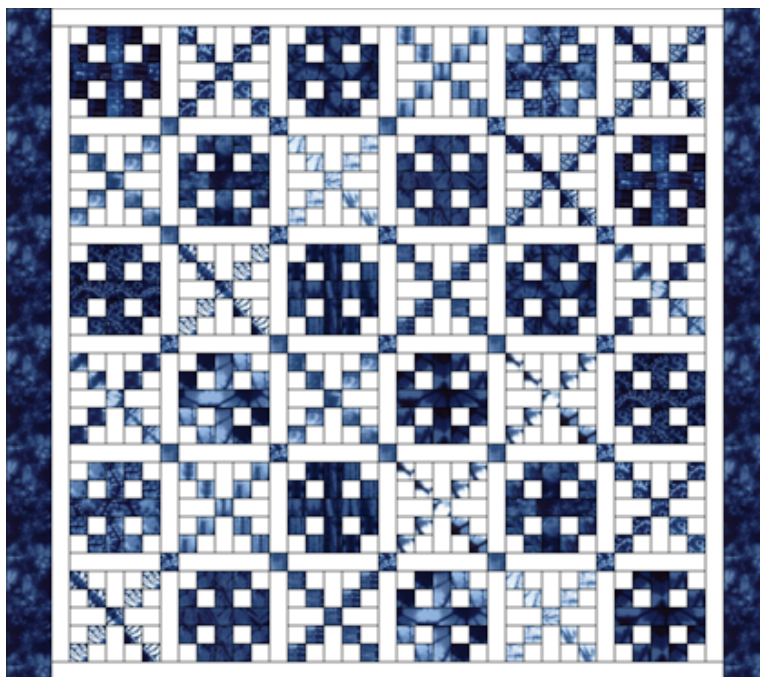


Fig 14A

Step 6: Sew the outer border strip to the top and bottom edges of the quilt and trim to the width of the quilt. See Fig 14B.

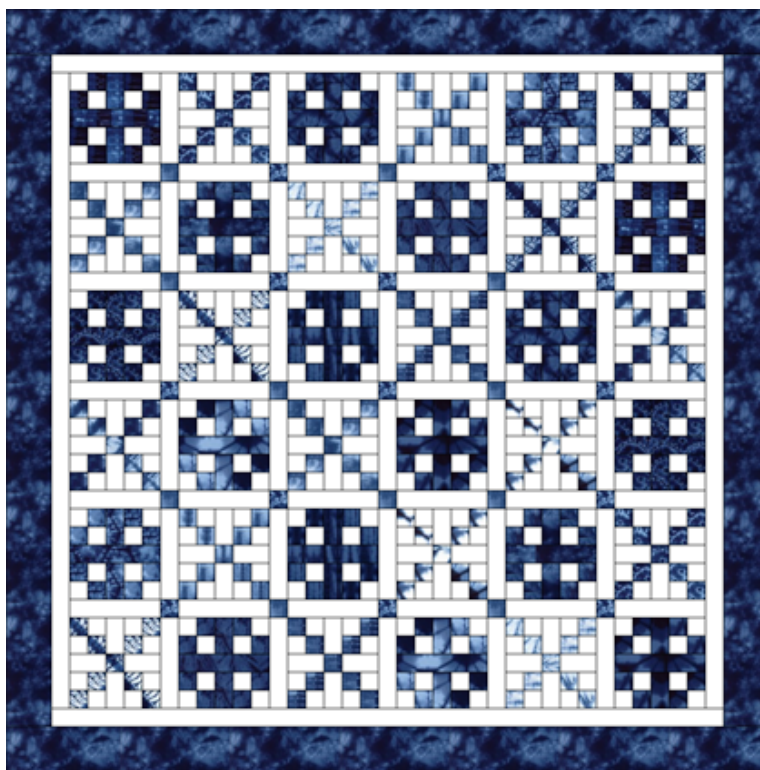


Fig 14B

Wagon Wheel™ ©2019, DDD Designs. All Rights Reserved. Reproduction in whole or in part in any language without permission of DDD Designs is prohibited. No one may copy, reprint or distribute any of this pattern for commercial use without written permission of the publisher, DDD Designs. Templates and patterns may be printed as necessary to make quilts for personal use only. Quilts made from any element of a DDD Designs pattern may be publicly displayed at quilt shows or donated to charity with or without giving credit to DDD Designs or the author. Enjoy the pattern. You purchased it.